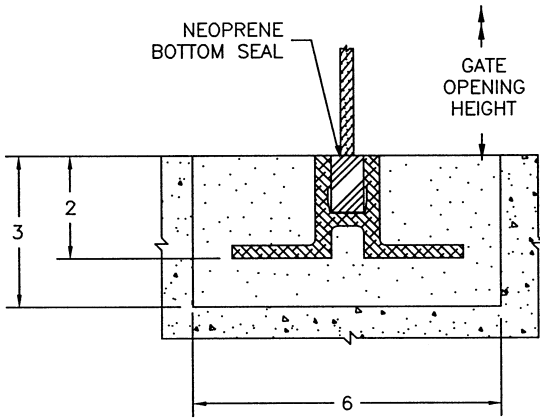


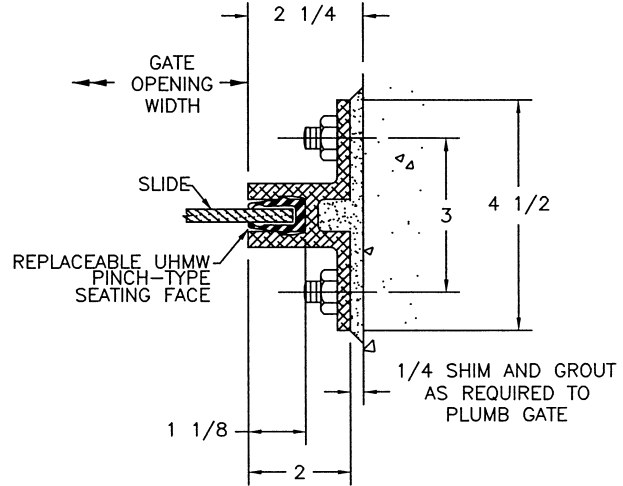
Aluminum Hand-Pull Gates

Hydro Gate manufactures several standard sizes of hand-pull or stop gates. An extruded metal section embeds in the side walls or is mounted on the face of the rectangular flume or conduit and acts as a guide for the gate slide. The gate consists of an aluminum plate reinforced if necessary with handholes for manual opening of the gate. A hand-pull gate is an economical way to divert water in rectangular channels.

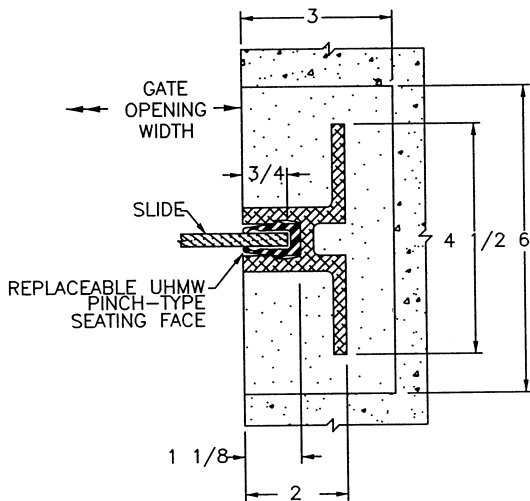
Material Specification – The side guides, slide plate and any necessary reinforcing for Hydro Gate hand-pull gates are manufactured from aluminum meeting the requirements of ATMS Specification B209 Alloy or B308 Alloy 6061.



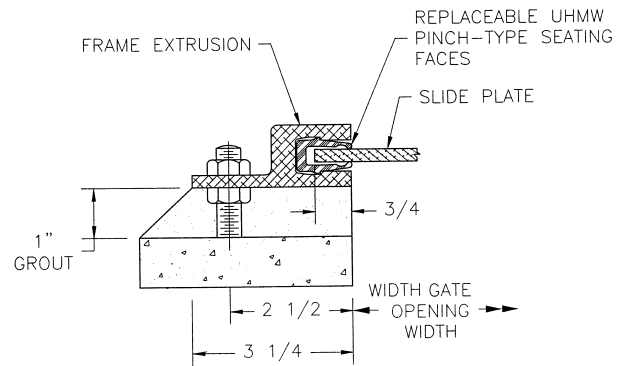
EMBEDDED FLUSH-BOTTOM



CHANNEL MOUNTED SIDE SECTION WITH POLYMER LINER



EMBEDDED SIDE SECTION



SECTION B-B SIDE SECTION SCALE: 3"=1'-0"

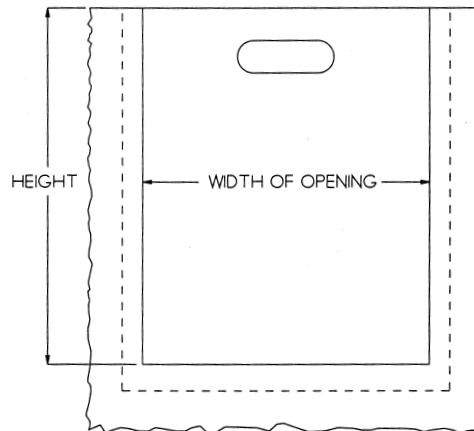


Figure 3-7 Embedded and Surface Mounted Frames