

Thimbles for Attaching Gate and Pipe

Hydro Gate can furnish two styles of special thimbles to facilitate attachment of incoming or outgoing pipelines from treatment plants. Both styles utilize the square front flange for attaching the square slide gate. The opening through the thimble and wall is converted to round to match the pipe. The other end of the E-type thimble has a round flange which can be drilled to match the commercially available flange for various cast iron, steel, or concrete pipes or pipe made from other materials. This round flange is drilled and tapped for ease of field assembly to the flange on the pipe. The length of the E thimble can be varied to match the thickness of the wall and thus avoid any other special concrete forming or adaptation.

Mechanical Joint Thimbles

The mechanical joint end of the thimble is bored to receive ductile iron pipe, packing and followers. The end is drilled and tapped for studs.

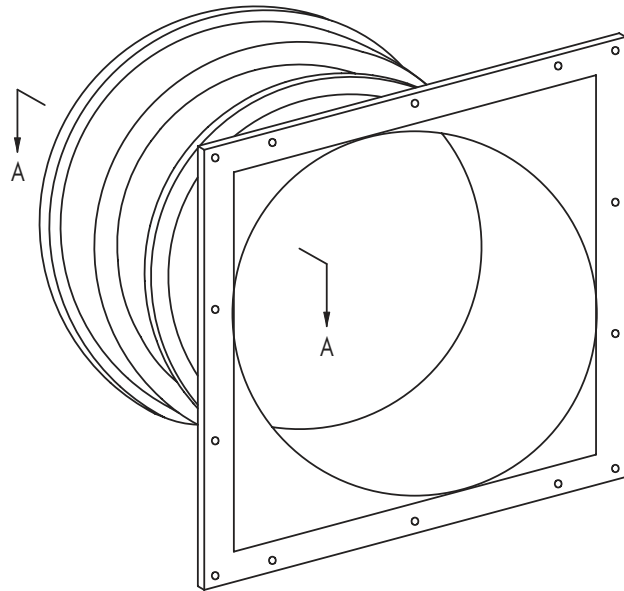
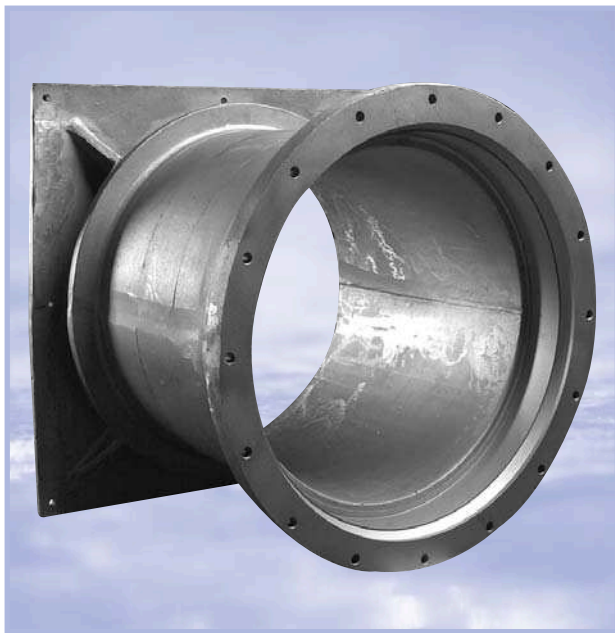
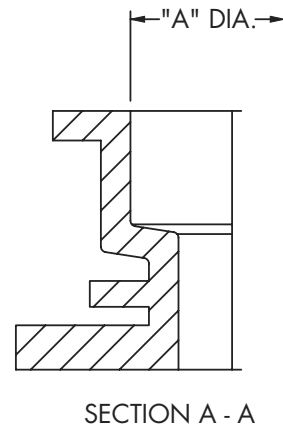


Figure 4-7
Mechanical Joint



Square flange with mechanical joint wall thimble.



Mechanical Joint Dimension

Gate Opening (In.)	A Diameter (In.)	Gate Opening (In.)	A Diameter (In.)
6	7.000	20	22.844
8	9.156	24	25.938
10	11.218	30	32.188
12	13.313	36	38.469
14	15.434	42	44.688
16	17.563	48	50.969
18	19.656		