

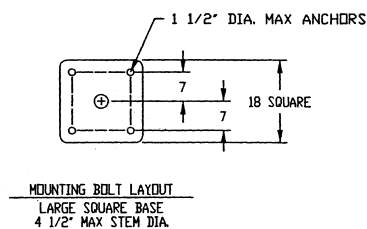
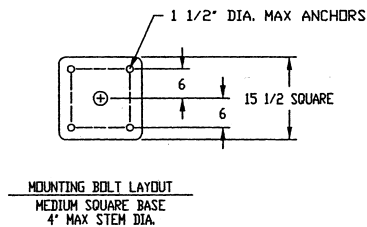
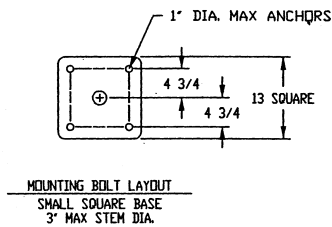
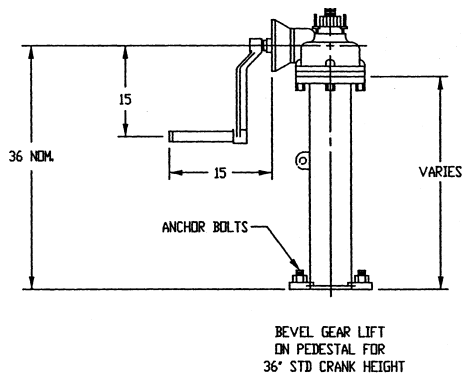
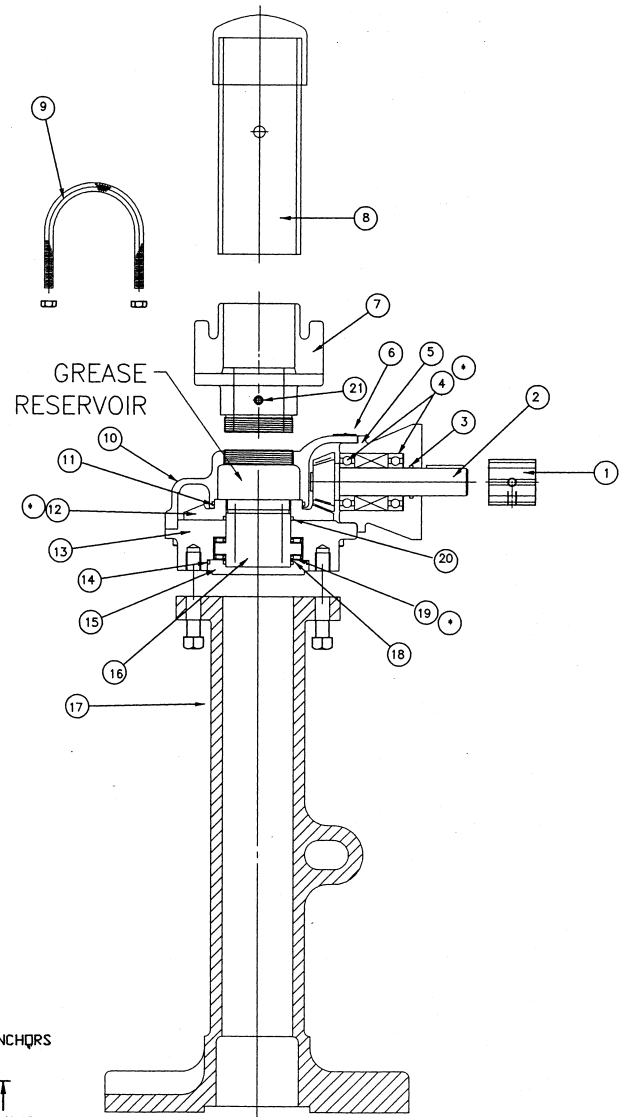
Bevel Gear Unit Capacities

Model	Ratio	Stem dia Range	Stem thread lead	Input turns to move 1 ft.	Output @ 40 lb. crank pull (50 ft-lbs) / stem diameter									
					1-1/4	1-1/2	2	2-1/2	3	3-1/2	4	4-1/2	5	
CPS2	2:1	1-1/4 – 1-1/2	1/2	48	5985	5380								
CPS4	4:1	1-1/2 – 2-1/2	1/2	96		10760	8950	7660						
CPS6	6:1	1-1/2 – 3	1/2 2/3	144 108		16140	13420	11490		9270				
CPS8	8:1	2 – 3	1/2 2/3	192 144			17895	15315		12365				
CPS12	(12:1)	2 – 3	1/2 2/3 2/3	288 216 72			23685	20270		16365 5455	4885			
CPS16	(16:1)	2-1/2 – 3	1/2 2/3 2/3	384 288 81				27030		21820 6140	19545 5500			
CPS20	(20:1)	2-1/2 – 3-1/2	1/2 2/3 2/3	480 360 81				33785		27270 6140	24430 5500	4980		
CPS36	(36:1)	3 – 4-1/2	2/3	648					49090	43975	39825	36390		
CPS48	(48:1)	3 – 4-1/2	2/3	864					65455	58630	53100	48520		
CPS96	(96:1)	3 – 5	2/3	1728					130910	117265	106195	97035	89330	

Higher ratio and capacity gear units available, contact Hydro Gate Engineering department.

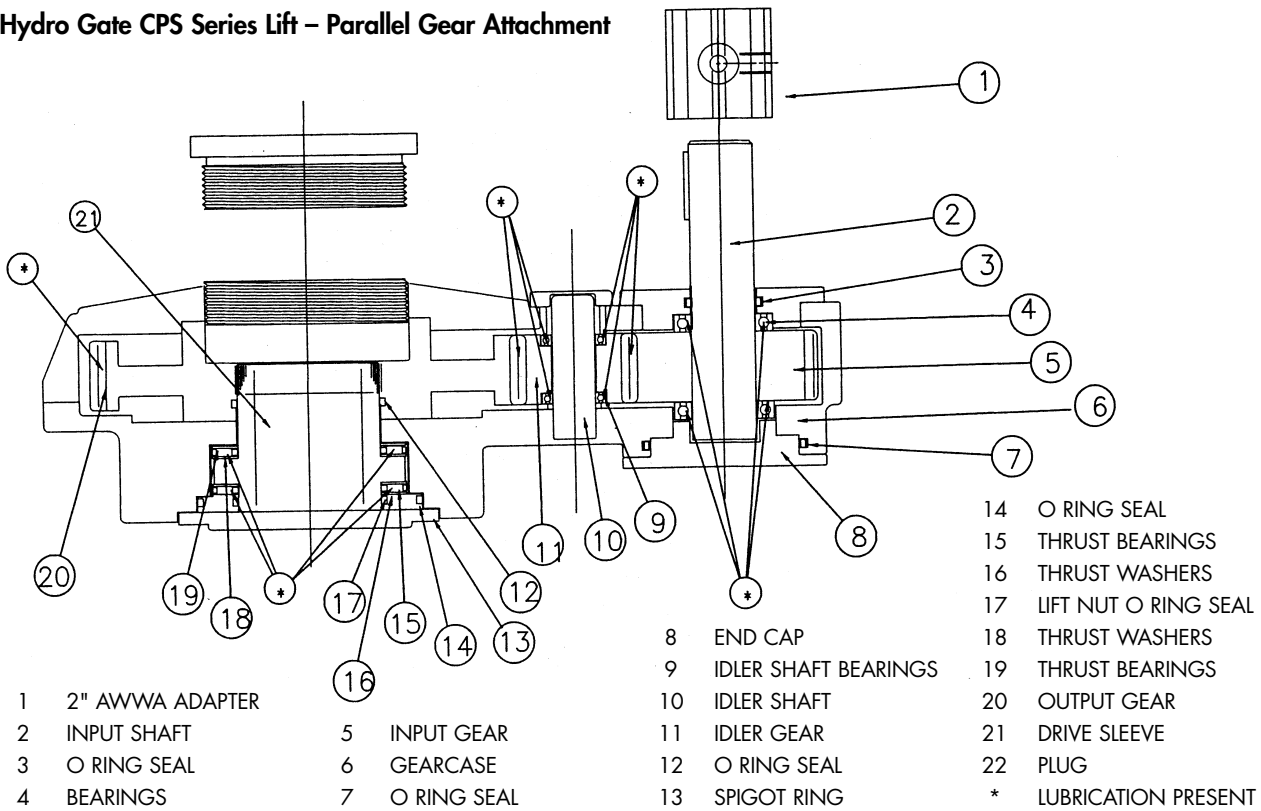
Hydro Gate CPS Series Lift – Bevel Gear Base Unit

- 1 AWWA 2" SQ. CRANK ADAPTER
- 2 INPUT SHAFT/PINION GEAR
- 3 INPUT SHAFT O RING
- 4 INPUT SHAFT BEARINGS
- 5 INPUT HOUSING
- 6 IDENTIFICATION TAG
- 7 STEM COVER ADAPTER
- 8 STEM COVER
- 9 STEM COVER MOUNTING U BOLT
- 10 PRIMARY GEAR HOUSING
- 11 BEVEL GEAR O RING SEAL
- 12 BEVEL GEAR
- 13 BASE PLATE
- 14 SPIGOT RING O RING SEAL
- 15 SPIGOT RING
- 16 LIFT NUT
- 17 PEDESTAL
- 18 THRUST WASHERS
- 19 THRUST BEARINGS
- 20 DRIVE NUT O RING SEAL
- 21 GREASE ZERK FITTINGS
- * LUBRICATION PRESENT



CPS Type Geared Lift Mounting Dimensions

Hydro Gate CPS Series Lift – Parallel Gear Attachment



Parallel Gear Unit Capacities

Model	Ratio	Stem Diameter Range	Stem thread lead	Input turns to move 1 ft.	Output @ 40 lb. crank pull (50 ft-lbs) / stem diameter									
					1-1/4	1-1/2	2	2-1/2	3	3-1/2	4	4-1/2	5	
SPG1.25	1.25:1	1-1/4 – 1-1/2	1/2	30	3960	3560								
SPG2	2:1	1-1/4 – 2	1/2	48	6445	5790	4815							
SPG3	3:1	1-1/4 – 2-1/2	1/2	72	9510	8545	7105	6080						
SPG6	6:1	1-1/2 – 2-1/2	1/2	144		17090	14210	12160						
SPG8	8:1	2 – 3	1/2 2/3	192 144			18950	16215	13090					
SPG12	12:1	2 – 3	1/2 2/3	288 216			23685	20270	16365					
SPG16	16:1	2-1/2 – 3-1/2	1/2 2/3	384 288				27030	21820	19545				
SPG24	24:1	2-1/2 – 3-1/2	1/2 2/3	576 432				40540	32730	29315				
SPG36	36:1	3 – 4-1/2	2/3	648					49090	43975	39825	36390		
SPG48	48:1	3 – 5	2/3	864					65455	58630	53100	48520	44665	

Higher ratio and capacity gear units available, contact Hydrogate Engineering department.