

Dimensional Data

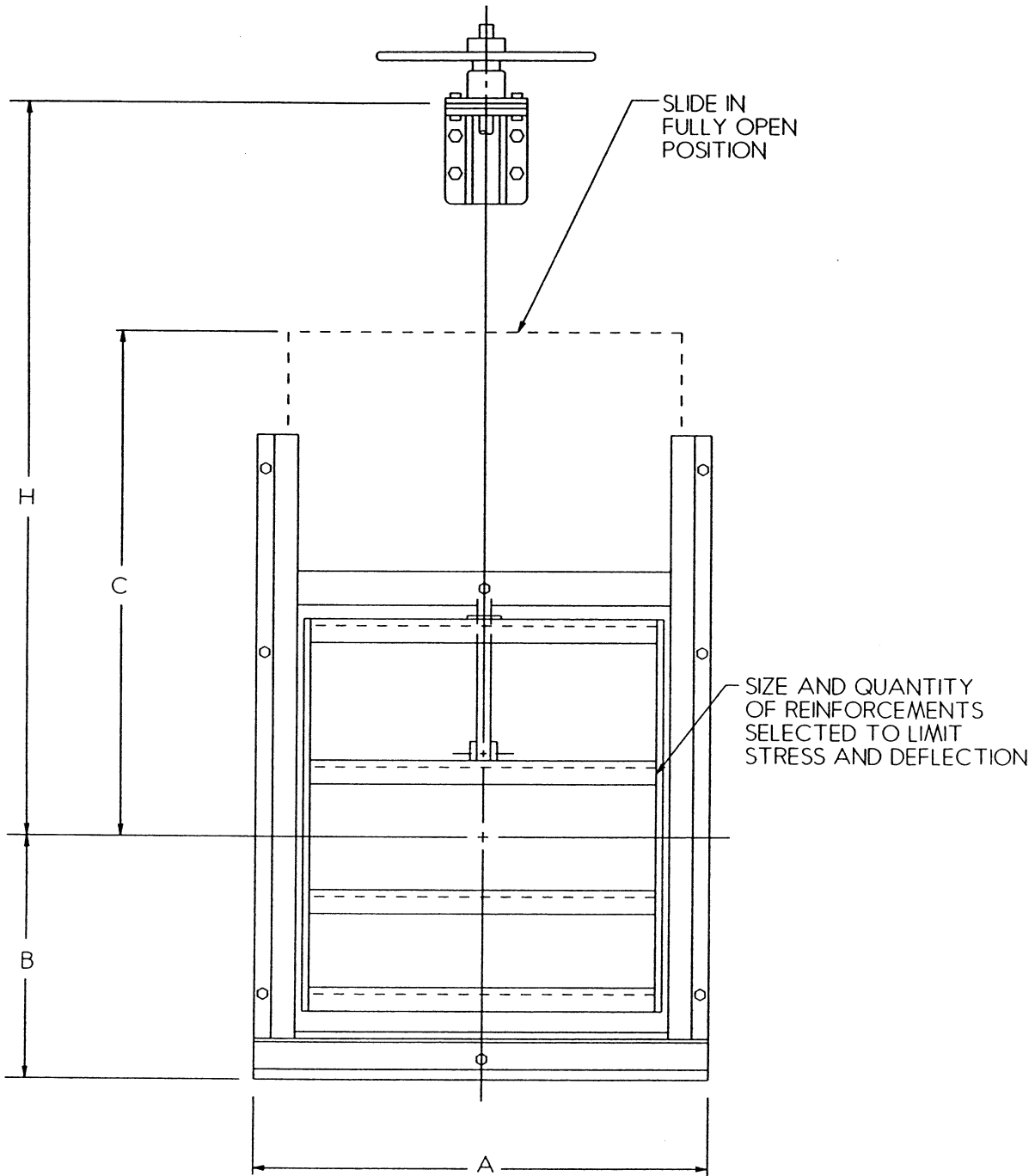


Figure 3-1
Fabricated Slide Gates – Not Self-Contained

Fabricated Slide Gates – Not Self-Contained

Width X Height	Carbon Steel & Galvanized		Stainless Steel		Aluminum		All Materials (C)	Recommended			"H" Distance
	(A)	(B)	(A)	(B)	(A)	(B)		Stem Dia.	Lift Model	Dia.	
12 x 12	20.00	10.00	20.00	10.00	21.00	10.00	20	1.25	H-1B	10	30
12 x 24	20.00	16.00	20.00	16.00	21.00	16.00	38	1.25	H-1B	10	48
18 x 18	26.00	13.00	26.00	13.00	27.00	13.00	29	1.25	H-1B	10	39
18 x 24	26.00	16.00	26.00	16.00	27.00	16.00	38	1.25	H-1B	10	48
18 x 30	26.00	19.00	26.00	19.00	27.00	19.00	47	1.25	H-1B	10	57
24 x 18	32.00	13.00	32.00	13.00	33.00	13.00	29	1.25	H-1B	10	39
24 x 24	32.00	16.00	33.50	16.00	33.00	16.00	38	1.25	H-1B	14	48
24 x 30	32.00	19.00	32.00	19.00	33.00	19.00	47	1.25	H-1B	14	57
24 x 36	32.00	22.00	32.00	22.00	33.00	22.00	56	1.25	H-2B	24	66
24 x 48	32.00	28.00	32.00	28.00	33.00	28.00	74	1.50	H-2B	30	84
30 x 24	38.00	16.00	38.00	16.00	39.00	16.00	38	1.25	H-2B	24	48
30 x 30	38.00	19.00	38.00	19.00	39.00	19.00	47	1.25	H-2B	24	57
30 x 36	38.00	22.00	38.00	22.00	39.00	22.00	56	1.25	H-2B	24	66
30 x 42	38.00	25.00	38.00	25.00	39.00	25.00	65	1.50	HPB	24	75
30 x 48	38.00	28.00	38.00	29.00	39.00	28.00	74	1.50	H-2B	24	84
36 x 24	44.00	16.00	44.00	16.00	45.00	16.00	38	1.25	H-2B	24	48
36 x 30	44.00	19.00	44.00	19.00	45.00	19.00	47	1.25	H-2B	24	57
36 x 36	44.00	22.00	44.00	22.00	45.00	22.00	56	1.25	H-2B	24	66
36 x 42	44.00	25.00	44.00	25.00	45.00	25.00	65	1.50	H-2B	24	75
36 x 48	44.00	28.00	44.00	29.00	45.00	28.00	74	1.50	H-2B	30	84
36 x 60	44.00	34.00	44.00	35.00	45.00	34.00	92	2.00	CPS	—	102
42 x 30	50.00	19.00	50.00	19.00	51.00	19.00	47	1.25	H-2B	24	57
42 x 36	50.00	22.00	50.00	22.00	51.00	22.00	56	1.25	H-2B	24	66
42 x 42	50.00	25.00	50.00	25.00	51.00	25.00	65	1.50	H-2B	30	75
42 x 48	50.00	28.00	50.00	28.00	51.00	28.00	74	1.50	H-2B	30	84
42 x 60	50.00	34.00	50.00	34.00	51.00	34.00	92	2.00	CPS	—	102
48 x 30	56.00	19.00	56.00	19.00	57.00	19.00	47	1.25	H-2B	24	57
48 x 36	56.00	22.00	56.00	22.00	57.00	22.00	56	1.25	H-2B	30	66
48 x 42	56.00	25.00	56.00	25.00	57.00	25.00	65	1.50	H-2B	30	75
48 x 48	56.00	28.00	56.00	28.00	57.00	28.00	74	1.50	CPS	—	84
48 x 60	56.00	34.00	56.00	34.00	57.00	34.00	92	2.00	CPS	—	102
48 x 72	56.00	40.00	56.00	40.00	57.00	40.00	110	2.00	CPS	—	120
54 x 54	62.00	31.00	62.00	31.00	63.00	31.00	83	1.50	CPS	—	93
60 x 36	68.00	22.00	68.00	22.00	69.00	22.00	56	1.50	CPS	—	66
60 x 42	68.00	25.00	68.00	25.00	69.00	25.00	65	1.50	CPS	—	75
60 x 48	68.00	28.00	68.00	28.00	69.00	28.00	74	1.50	CPS	—	84
60 x 60	68.00	34.00	68.00	34.00	69.00	34.00	92	2.00	CPS	—	102
60 x 72	68.00	40.00	68.00	40.00	69.00	40.00	110	2.00	CPS	—	120
72 x 42	80.00	25.00	80.00	25.00	81.00	25.00	65	1.50	CPS	—	75
72 x 48	80.00	28.00	80.00	28.00	81.00	28.00	74	1.50	CPS	—	84
72 x 60	80.00	34.00	80.00	34.00	81.00	34.00	92	2.00	CPS	—	102
72 x 72	80.00	40.00	80.00	40.00	81.00	40.00	110	2.00	CPS	—	120

NOTE: All measurements are in inches.

A = Width**B = Centerline to bottom of gate flange****C = Centerline to top of gate in full open
position****H = Centerline to top of concrete**